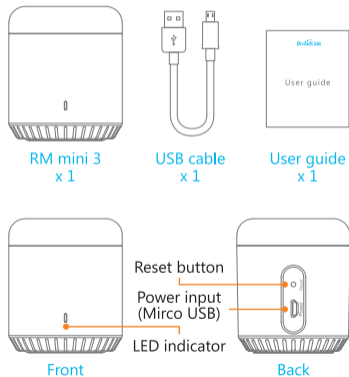
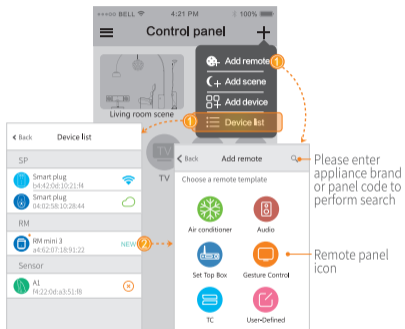


Package Content

After opening package, please check contents as below



Add Device



- NEW** New device Add new device;
- Local Connect device with the Wi-Fi smart phone connected;
 - Remote Control online device by remote;
 - Offline Device is offline and it is out of control. Please check the network connection.

Instruction of LED indicator

- **Blue indicator flashes quickly:**
Waiting for configuration (device is under factory state or reset). Under this circumstance, you can tap 'Add device' in APP and it guides you to finish the configuration.
- **Blue indicator flashes slowly:**
Network is down, power supply is down and then recovers, or during the configuration process).
- **White indicator flashes once:**
Transmitting infrared signal (it occurs when learning the infrared codes or controlling appliance).

Note :

- Do not use non-ASCII characters in Wi-Fi name or password. It may cause configuration failure. The device supports Wi-Fi of 2.4G 802.11 b/g/n only.
- Please place the device on open place. Please point remote to the top of the device during learning we suggest the distance is less than 1m.
- Please configure the device according the user guide. If you encounter problems, please contact our authorized distributors or our support team.
- All the technical details are subjected to the actual product performance.

Hangzhou Gubei Electronics Technology Co., Ltd.

Address: Room 106, No.611 Jianghong Road, Binjiang District, Hangzhou, Zhejiang, China(310052)

RM mini 3
Universal Remote
User Guide



Facebook



Twitter



LinkedIn

Hotline

400 0900 955

Website: www.ibroadlink.com
Service: support@ibroadlink.com

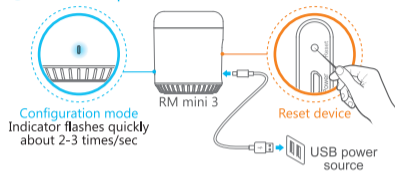
Step 1 Install APP



Scan the QR code on package to download and install APP

Step 2 User Guide

① Connect to power



Configuration mode
Indicator flashes quickly
about 2-3 times/sec

② Connect smart phone to Wi-Fi

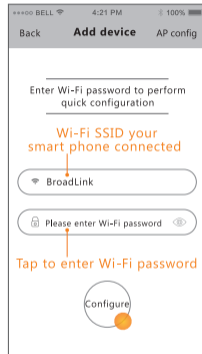


③ Open the APP



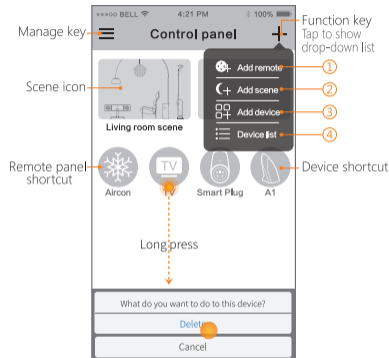
- Connect to power and set RM mini 3 as config mode (indicator flashes quickly).
- Please choose the proper adapter whose output power is 5V DC and $\geq 500\text{mA}$ for RM mini 3.
- Please place the device on open table-board. Please point the remote to the top of the device during learning, and we suggest the distance from the device to remote should be less than 1m.

Step 3 Add device



- If configuration failed, please reset the device and re-configure
- **Reset device:** Long press on reset button with a slim needle for more than 5s until the indicator flashes quickly.

Step 4 Control panel



- ① Tap to add remote control panel;
- ② Tap to add scene;
- ③ Tap to add device;
- ④ Tap to view added devices.